

**Company** **Profile**

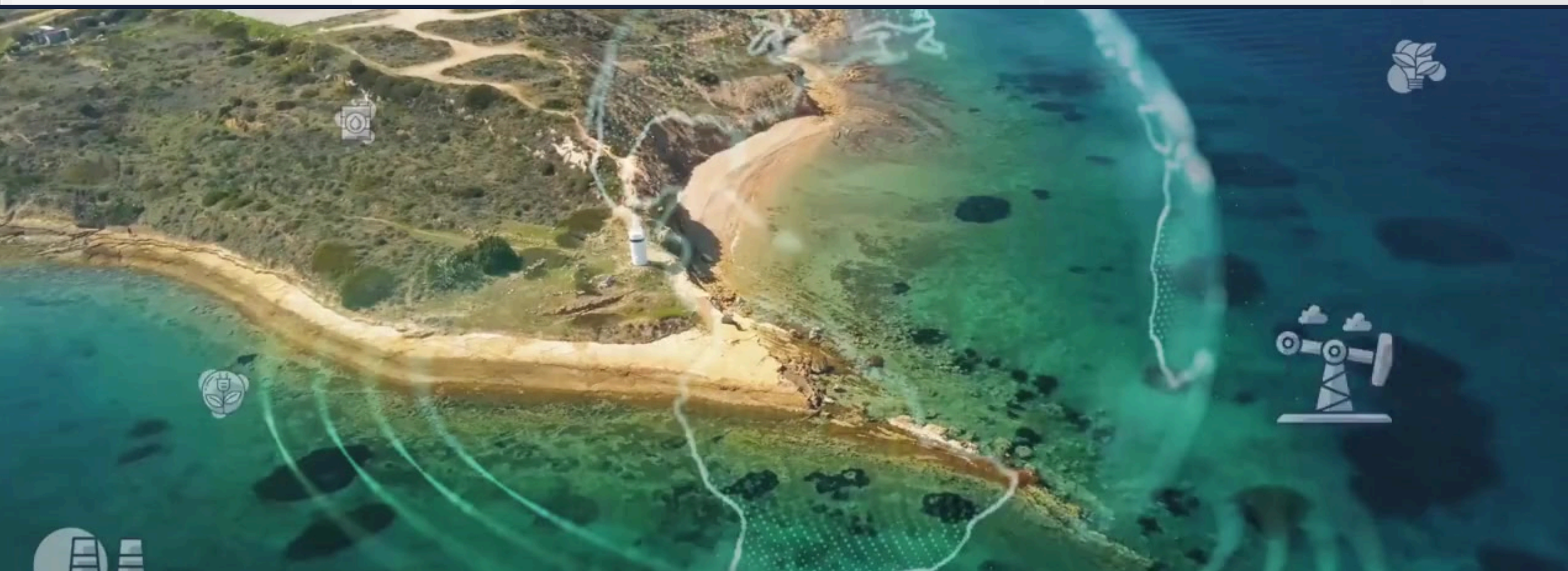
# SRA Consulting: Company Overview

MORE →

Your Partner for Sustainable Growth



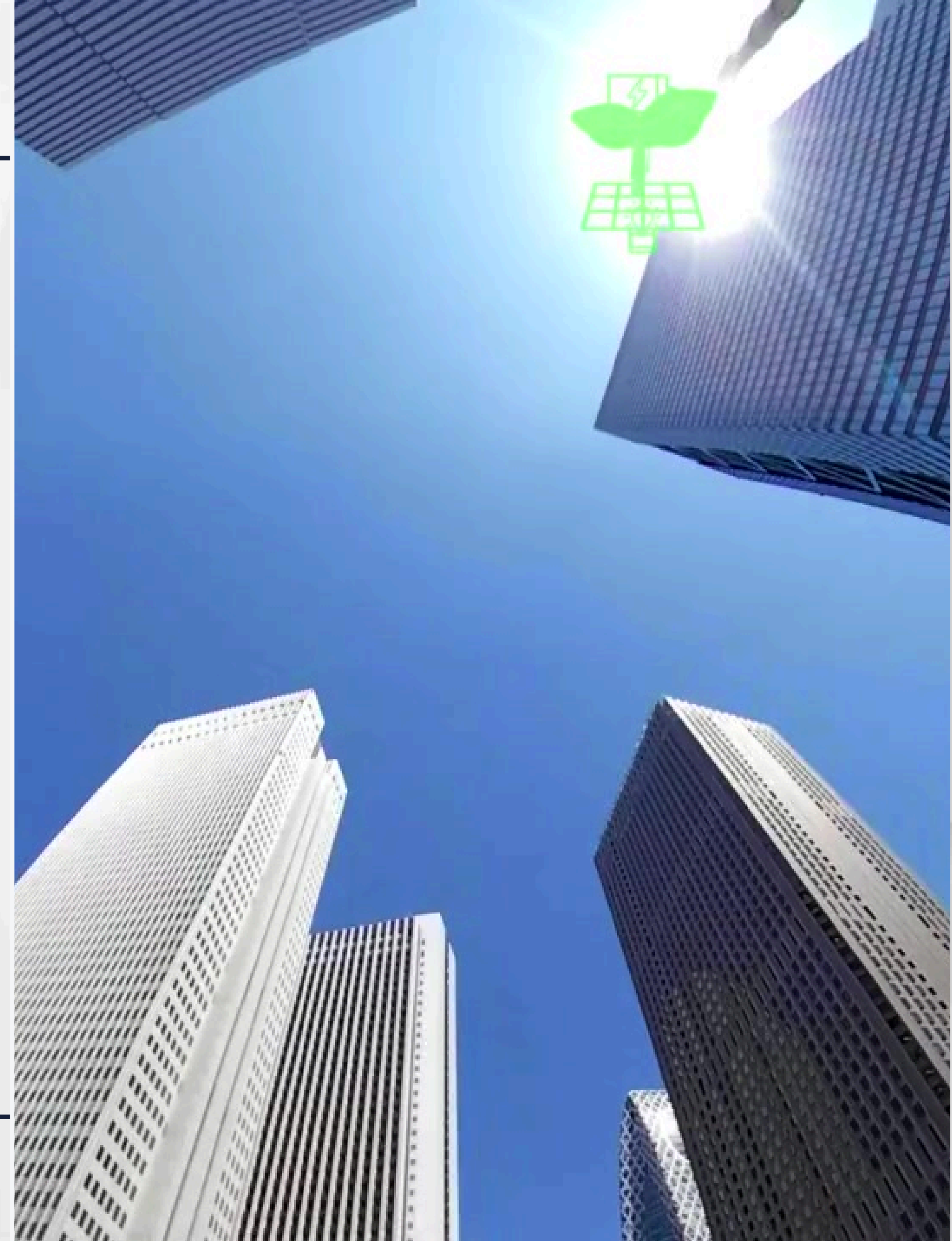
SRA Consulting is a consulting firm specializing in accounting, sustainability and governance, business and management. **Our firm offers a comprehensive range of consulting services** tailored to meet the unique needs of our clients. These services encompass areas **such as assurance, sustainability & reporting strategies, operational performance, accounting, governance, and various other consulting solutions.**





We provide innovative solutions for the business and government sectors and **help them to effectively manage the sustainability challenges** that the world is increasingly facing.

Our goal is to **help our clients to achieve sustainable growth.**



# OUR SERVICES FOR YOUR SUSTAINABLE GROWTH



We provide a wide range of consultation services to support your sustainable growth

A large orange circle with a white swoosh on the left side, containing text in a white rounded rectangle.

Accounting  
and  
Financial Advisory  
Services

A large green circle with a white swoosh on the left side, containing text in a white rounded rectangle.

Sustainability  
and  
Governance

A large blue circle with a white swoosh on the left side, containing text in a white rounded rectangle.

Research  
and  
Training

# OUR SERVICES FOR YOUR SUSTAINABLE GROWTH



We provide a wide range of consultation services to support your sustainable growth

A large orange circle with a thick yellow border. Inside the circle, the text 'Accounting and Financial Advisory Services' is written in a black, sans-serif font, arranged in three lines.

Accounting  
and  
Financial Advisory  
Services

A large green circle with a thick green border. Inside the circle, the text 'Sustainability and Governance' is written in a black, sans-serif font, arranged in three lines.

Sustainability  
and  
Governance

A large blue circle with a thick blue border. Inside the circle, the text 'Research and Training' is written in a black, sans-serif font, arranged in three lines.

Research  
and  
Training

# OUR SERVICES FOR YOUR SUSTAINABLE GROWTH



**We support our clients in implementing accounting standards and making informed financial decisions.**

A large orange circle with a yellow border, containing the text "Accounting and Financial Advisory Services".

**Accounting  
and  
Financial Advisory  
Services**

# OUR SERVICES FOR YOUR SUSTAINABLE GROWTH



**Accounting  
and  
Financial Advisory  
Services**

A large, circular graphic with a thick yellow border and a brown interior. Inside the circle, the text 'Accounting and Financial Advisory Services' is written in a bold, black, sans-serif font, arranged in four lines. The text is centered within the circle.

**We support our clients in implementing accounting standards and making informed financial decisions.**

- Implementation of PSAK
- Development of accounting policies and standard operating procedures (SOP)
- Review of financial information
- Assistance with accounting-related decision-making
- Support with financial and investment decision-making

# OUR SERVICES FOR YOUR SUSTAINABLE GROWTH



**We also offer strategic management advisory services.**

A large, orange circular graphic with a yellow border, containing the text 'Accounting and Financial Advisory Services'. The text is arranged in three lines: 'Accounting' on the top line, 'and' on the middle line, and 'Financial Advisory Services' on the bottom line. The text is in a bold, black, sans-serif font.

**Accounting  
and  
Financial Advisory  
Services**



# OUR SERVICES FOR YOUR SUSTAINABLE GROWTH

A large orange circle with a yellow border, containing the text 'Accounting and Financial Advisory Services' in white. The circle has a subtle gradient and a slight shadow.

## Accounting and Financial Advisory Services

**We also offer strategic management advisory services.**

- Financial, Projection and Modelling
- RJPP, PKAP
- Corporate Action Analysis
- Taxation

# OUR SERVICES FOR YOUR SUSTAINABLE GROWTH



We provide a wide range of consultation services to support your sustainable growth

A large, solid orange circle with a subtle white swoosh on the right side, serving as a background for the text.

Accounting  
and  
Financial Advisory  
Services

A large, solid green circle with a subtle white swoosh on the right side, serving as a background for the text.

Sustainability  
and  
Governance

A large, solid blue circle with a subtle white swoosh on the right side, serving as a background for the text.

Research  
and  
Training

# OUR SERVICES FOR YOUR SUSTAINABLE GROWTH



We provide a wide range of consultation services to support your sustainable growth



Accounting  
and  
Financial Advisory  
Services



Sustainability  
and  
Governance



Research  
and  
Training

# OUR SERVICES FOR YOUR SUSTAINABLE GROWTH



**We also help our clients in making sustainability strategy and policies as well as reporting.**



**Sustainability  
and  
Governance**

A large green circle with a yellow border, containing the text 'Sustainability and Governance' in a bold, black, sans-serif font. The circle has a slight 3D effect with a white highlight on the left side.



# OUR SERVICES FOR YOUR SUSTAINABLE GROWTH



**We also help our clients in making sustainability strategy and policies as well as reporting.**



**Sustainability  
and  
Governance**

- Sustainability Strategy and Policies
- Sustainability & Annual Report
- Sustainability Report Assurance
- CSR Impact Assessment using Social Return on Investment (SROI)
- ESG Performance Analysis and Database Management

# OUR SERVICES FOR YOUR SUSTAINABLE GROWTH



**We also help our clients in making sustainability strategy and policies as well as reporting.**



**Sustainability  
and  
Governance**

## **Sustainability Reporting Assurance**

- Assurance on Sustainability Report

# OUR SERVICES FOR YOUR SUSTAINABLE GROWTH



**We also help our clients in making sustainability strategy and policies as well as reporting.**

A large green circle with a yellow outline, containing the text 'Sustainability and Governance' in a white, sans-serif font. The circle has a slight 3D effect with a yellow highlight on the left side.

**Sustainability  
and  
Governance**

## **Sustainability Reporting Assurance**

- Assurance on Sustainability Report

We are one of the few Indonesian consulting firms that hold a license for assurance services from Accountability 1000 (AA1000), an international organization providing standard assurance services.



**AA1000**  
Licensed Assurance Provider  
000-298

# OUR SERVICES FOR YOUR SUSTAINABLE GROWTH



**We also provide assistance to our clients in implementing corporate governance.**

A large green circle with a yellow outline, containing the text 'Sustainability and Governance' in a white, sans-serif font. The circle is positioned on the left side of the slide.

**Sustainability  
and  
Governance**



# OUR SERVICES FOR YOUR SUSTAINABLE GROWTH



**We also provide assistance to our clients in implementing corporate governance.**

A large green circle with a yellow outline, containing the text 'Sustainability and Governance' in a bold, black, sans-serif font. The circle has a slight 3D effect with a yellow highlight on the left side.

**Sustainability  
and  
Governance**

## **Governance and Risk Advisory**

- Code of Corporate Governance Development
- Board Charter Development
- Standard Operating Procedure (SOP) Development
- Corporate Governance Assessment
- Risk management and Internal Control

# OUR SERVICES FOR YOUR SUSTAINABLE GROWTH



We provide a wide range of consultation services to support your sustainable growth



Accounting  
and  
Financial Advisory  
Services



Sustainability  
and  
Governance



Research  
and  
Training

# OUR SERVICES FOR YOUR SUSTAINABLE GROWTH



**We also provide research services to our clients and academics to support clients' vision and missions.**

**Research  
and  
Training**

A large blue circle with a yellow border, containing the text 'Research and Training' in a bold, black, sans-serif font. The circle has a slight 3D effect with a white highlight on the left side.

# OUR SERVICES FOR YOUR SUSTAINABLE GROWTH



**Research  
and  
Training**

**We also provide research services to our clients and academics to support clients' vision and missions.**

- Market Survey
- Industry Survey
- Accounting Business
- Economic Research
- Research on Financial Accounting, Sustainability, Governance, Public Sectors, ESG, and other wide range of topics
- Data collection
- Training (SRA Academy): PSAK Implementation, Governance, Financial Model, Risk, and Certification Review



# EXAMPLES OF OUR PRODUCTS

## PSAK 7 Series

### Implementation at:

- PT Kimia Farma Tbk
- PT Angkasa Pura Grup
- PT Ninda Karya (Persero)

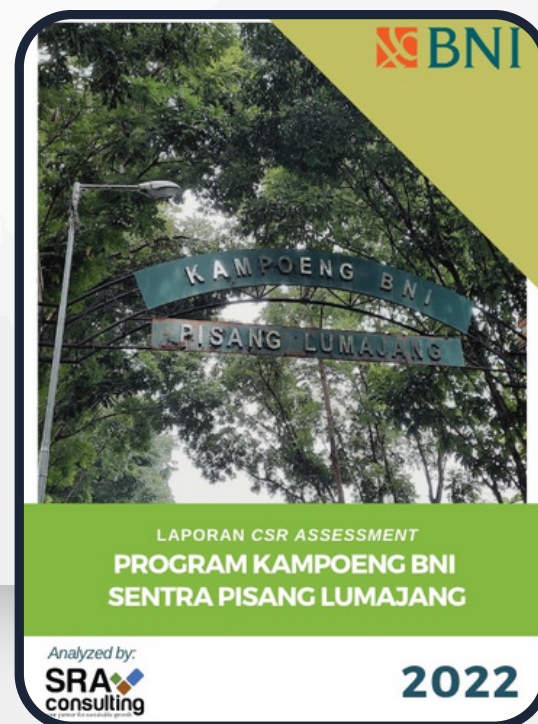
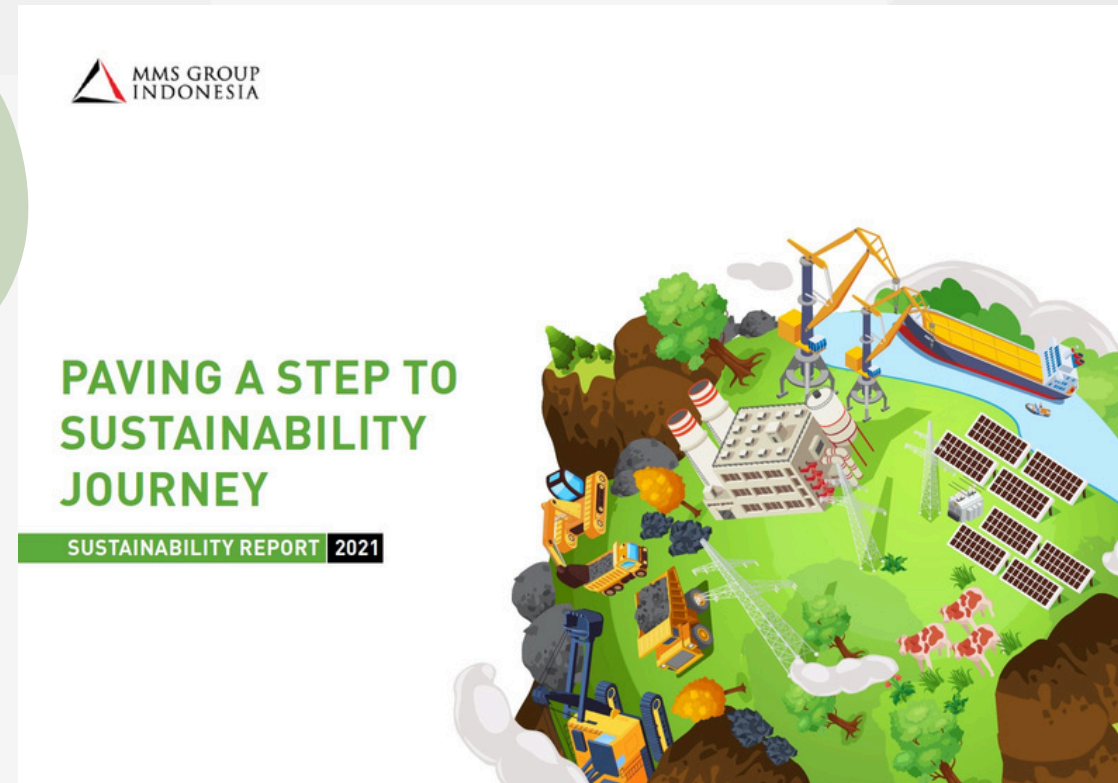
## Development of

### accounting policies and SOP at:

- PT Taspen (Persero)
- PT Angkasa Pura I

## Financial, Projection and Modelling at:

- PT Adhi Jalintim Riau
- PT Jalintim Adhi Abipraya



**SRA**  
consulting



# TESTIMONIALS



*"It has been our second time to work with SRA Consulting team for calculation of PSAK 71 Instrumen Keuangan since its early implementation in 2020. We have been assisted and satisfied with the work of SRA Consulting team who has been on time as well as support they gave in a form of explanation to auditor. I am thankful for SRA Consulting team. We wish you all the best!"*

**Selvi Trianingrum, Accounting Vice President  
PT Nindya Karya (Persero)**



*"Presentation and worksheet of PSAK 71, 72, and 73 implementation from SRA Consulting have been easy to understand by our Company and well-accepted by External Auditors who did audit work in Our Company."*

**Andi Tandri, Accounting Staff  
PT Sinkona Indonesia Lestari**



*"Overall, we are satisfied with SRA Consulting's service and work quality."*

**Amir Hamzah  
Consolidated Accounting Assistant Manager  
PT Kimia Farma Tbk**



*"SRA Consulting's service has been great."*

**Shendy Kurniawan  
Vice President Corporate Planning  
PT Angkasa Pura Logistik**



*"SRA Consulting's consultants have been cooperative toon explaining accounting methods used."*

**Rennie Purbasari  
Accounting Manager  
PT Kimia Farma Apotek**



# OUR CLIENTS



No.	Clients	Type of Services	Consultation Period
1	PT Angkasa Pura Properti	Accounting and Financial Advisory	2025
2	PT Kimia Farma Tbk	Accounting and Financial Advisory	2025
3	PT Perusahaan Pengelola Aset dan anak perusahaan	Accounting and Financial Advisory	2025
4	PT Angkasa Pura Hotel	Accounting and Financial Advisory	2024 – 2025
5	PT Angkasa Pura Suport	Accounting and Financial Advisory	2024 – 2025
6	PT Angkasa Pura Logistik	Accounting and Financial Advisory	2024 – 2025
7	PT Marga Mandalasakti	Accounting and Financial Advisory	2024 – 2025
8	PT Lintas Marga Sedaya	Accounting and Financial Advisory	2024 – 2025
9	PT PGAS Telekomunikasi Nusantara	Accounting and Financial Advisory	2024 – 2025
10	PT Samudera Indonesia Tbk	Sustainability Advisory	2025
11	PT Samudera Indonesia Tangguh	Sustainability Advisory	2025
12	PT Astra Sedaya Finance	Sustainability Advisory	2025

# OUR CLIENTS



No.	Clients	Type of Services	Consultation Period
13	PT Adhi Karya (Persero) Tbk	Accounting and Financial Advisory	2024 - 2025
14	PT Gagas Energi Indonesia	Accounting and Financial Advisory	2024-2025
15	PT Permata Graha Nusantara	Accounting and Financial Advisory	2024
16	PT PGN LNG Indonesia	Accounting and Financial Advisory	2024
17	PT Nindya Karya	Accounting and Financial Advisory	2024 – 2025
18	PT Nindya Beton	Accounting and Financial Advisory	2024 – 2025
19	PT Indexim Coalindo	Sustainability Advisory	2024 – 2025
20	PT Geo Dipa Energi (Persero)	Sustainability Advisory	2024 – 2025
21	PT Green Power Group Tbk	ESG Framework	2024
22	PT Samudera Indonesia Tbk	Sustainability Advisory	2024
23	PT Samudera Indonesia Tangguh	Sustainability Advisory	2024
24	PT Astra Agro Lestari Tbk	Sustainability Advisory	2024



# OUR CLIENTS



No.	Clients	Type of Services	Consultation Period
25	PT Astra Sedaya Finance	Sustainability Advisory	2024
26	PT Asuransi Astra Buana	Sustainability Advisory	2024
27	PT Kimia Farma Diagnostik	Accounting and Financial Advisory	2024
28	PT Asuransi Jasindo Syariah	Accounting and Financial Advisory	2023 - 2024
29	PT Perusahaan Pengelola Aset dan anak perusahaan	Accounting and Financial Advisory	2023 - 2024
30	PT Indofarma Tbk dan anak perusahaan	Accounting and Financial Advisory	2023 - 2024
31	PT Angkasa Pura Retail	Accounting and Financial Advisory	2023
32	PT ICON Plus	Accounting and Financial Advisory	2023
33	Badan Layanan Umum Pusat Investasi Pemerintah (BLU PIP)	Accounting and Financial Advisory	2023
34	PT Astra Agro Lestari Tbk	Sustainability Advisory	2023
35	PT FKS Food Sejahtera Tbk	Sustainability Advisory	2023
36	PT FKS Multi Agro Tbk	Sustainability Advisory	2023

# OUR CLIENTS



No.	Clients	Type of Services	Consultation Period
37	PT Angkasa Pura Properti	Accounting and Financial Advisory	2023 - 2024
38	PT Angkasa Pura Logisik	Accounting and Financial Advisory	2023 - 2024
39	PT Kimia Farma Tbk dan anak Perusahaan	Accounting and Financial Advisory	2023 - 2024
40	PT Nindya Karya (Persero)	Accounting and Financial Advisory	2023 - 2024
41	PT Adhi Karya (Persero) Tbk	Accounting and Financial Advisory	2022 - 2023
42	PT Jalintim Adhi Abipraya (JAA) dan PT Adhi Jalintim Riau (AJR)	Accounting and Financial Advisory	2022
43	PT Bank Negara Indonesia (Persero) Tbk	Sustainability Advisory	2022 – 2023
44	PT Astra Agro Lestari Tbk	Sustainability Advisory	2022
45	PT Astra Sedaya Finance	Sustainability Advisory	2022
46	PT Asuransi Astra Buana	Sustainability Advisory	2022, 2024
47	PT Brawijaya Investama	Sustainability Advisory	2022
48	MMS Group Indonesia (MMSGI)	Sustainability Advisory	2022

# OUR CLIENTS



No.	Clients	Type of Services	Consultation Period
49	PT PG Rajawali II	Accounting and Financial Advisory	2022
50	PT Angkasa Pura Logistik	Accounting and Financial Advisory	2022
51	PT Nusa Konstruksi Engineering, Tbk	Accounting and Financial Advisory	2022
52	PT Serasi Autoraya	Sustainability Advisory	2022
53	PT Bank Negara Indonesia (Persero) Tbk	Sustainability Advisory	2022
54	PT Teknologi Karya Digital Nusa	Sustainability Advisory	2022
55	PT Angkasa Pura Logistik	Accounting and Financial Advisory	2022
56	PT Angkasa Pura Hotel	Accounting and Financial Advisory	2021 – 2022
57	PT Angkasa Pura Logistik	Accounting and Financial Advisory	2021 – 2022
58	PT Kimia Farma Tbk dan anak perusahaan	Accounting and Financial Advisory	2021 – 2022
59	PT Perusahaan Pengelola Aset (Persero) dan anak perusahaan	Accounting and Financial Advisory	2021 – 2022
60	PT Perusahaan Nindya Karya	Accounting and Financial Advisory	2021 – 2022



# OUR CLIENTS



No.	Clients	Type of Services	Consultation Period
61	PT Indofarma Tbk dan anak perusahaan	Accounting and Financial Advisory	2021 – 2022
62	Asosiasi Penyelenggara Jasa Internet Indonesia	Research and Training	2021 – 2022
63	PT Krakatau Steel (Persero) Tbk	Accounting and Financial Advisory	2021
64	PT Bank Negara Indonesia (Persero) Tbk	Sustainability Advisory	2021
65	PT Krakatau Steel (Persero)	Accounting and Financial Advisory	2021
66	PT Indofarma Tbk dan anak perusahaan	Accounting and Financial Advisory	2021 – 2022
67	PT Perusahaan Nindya Karya dan anak perusahaan	Accounting and Financial Advisory	2021
68	PT Petrosea Tbk	Accounting and Financial Advisory	2021
69	PT Karya Bumi Lestari	Accounting and Financial Advisory	2021
70	PT Nusa Konstruksi Enjineering, Tbk	Accounting and Financial Advisory	2021
71	PT Multi Terminal Indonesia	Accounting and Financial Advisory	2021
72	PT Petrosea Tbk	Accounting and Financial Advisory	2021

# OUR CLIENTS



No.	Clients	Type of Services	Consultation Period
73	PT Zitechasia dan PT Indosol Water Solution	Accounting and Financial Advisory	2020 – 2021
74	PT Perusahaan Nindya Karya dan anak perusahaan	Accounting and Financial Advisory	2020 – 2021
75	PT Perusahaan Pengelola Aset (Persero) dan anak perusahaan	Accounting and Financial Advisory	2020 – 2021
76	PT Angkasa Pura Hotel	Accounting and Financial Advisory	2020 – 2021
77	PT Angkasa Pura Retail	Accounting and Financial Advisory	2020 – 2021
78	PT Angkasa Pura Logistik	Accounting and Financial Advisory	2020 – 2021
79	PT Angkasa Pura Support	Accounting and Financial Advisory	2020 – 2021
80	PT Hutama Karya (Persero)	Accounting and Financial Advisory	2020 – 2021
81	PT Petrosea Tbk	Accounting and Financial Advisory	2020 – 2021
82	PT Toba Bara Sejahtera Tbk.	Accounting and Financial Advisory	2020 – 2021
83	PT Petrosea Tbk	Accounting and Financial Advisory	2020
84	PT Taspen (Persero)	Accounting and Financial Advisory	2020



# OUR CLIENTS



No.	Clients	Type of Services	Consultation Period
85	PT Asuransi Jiwa Taspen	Accounting and Financial Advisory	2020
86	PT Mitrabahtera Segara Sejati Tbk	Accounting and Financial Advisory	2020
87	PT Toba Bara Tbk dan Anak Perusahaan	Accounting and Financial Advisory	2020
88	PT Kuala Pelapuhan Indonesia	Accounting and Financial Advisory	2020
89	PT Kideco Jaya Agung	Accounting and Financial Advisory	2020
90	PT Hutama Karya (Persero)	Accounting and Financial Advisory	2019 – 2021
91	PT Indika Indonesia Resources	Accounting and Financial Advisory	2019 – 2021
92	PT Petrosea Tbk	Accounting and Financial Advisory	2019 – 2021
93	PT Waskita Realty	Accounting and Financial Advisory	2019

# OUR CLIENTS



# OUR CLIENTS



# CONTACT US



-  South Quarter Tower A, 18th floor, Unit G&F  
Jl R.A. Kartini Kav 8, Cilandak Barat.  
Jakarta Selatan – 12430.
-  Tel.+6221 8066-9634
-  [sraconsultingindonesia@gmail.com](mailto:sraconsultingindonesia@gmail.com)
-  [sraconsulting.co.id](http://sraconsulting.co.id)
-  [@sraconsulting](https://www.instagram.com/sraconsulting)
-  [SRA Consulting](https://www.youtube.com/SRA Consulting)
-  <https://www.linkedin.com/company/sraconsulting-indonesia>



*Your Partner for Sustainable Growth*



